

GILDED REALMS

**Farrah Mahmood
Rizwan Ali
Syed A. Irfan**

The Show will be Inaugurated by
Prof. Ustad Bashir Ahmed

The Show will continue
till 30th August, 2024



ARTSOCH
CONTEMPORARY

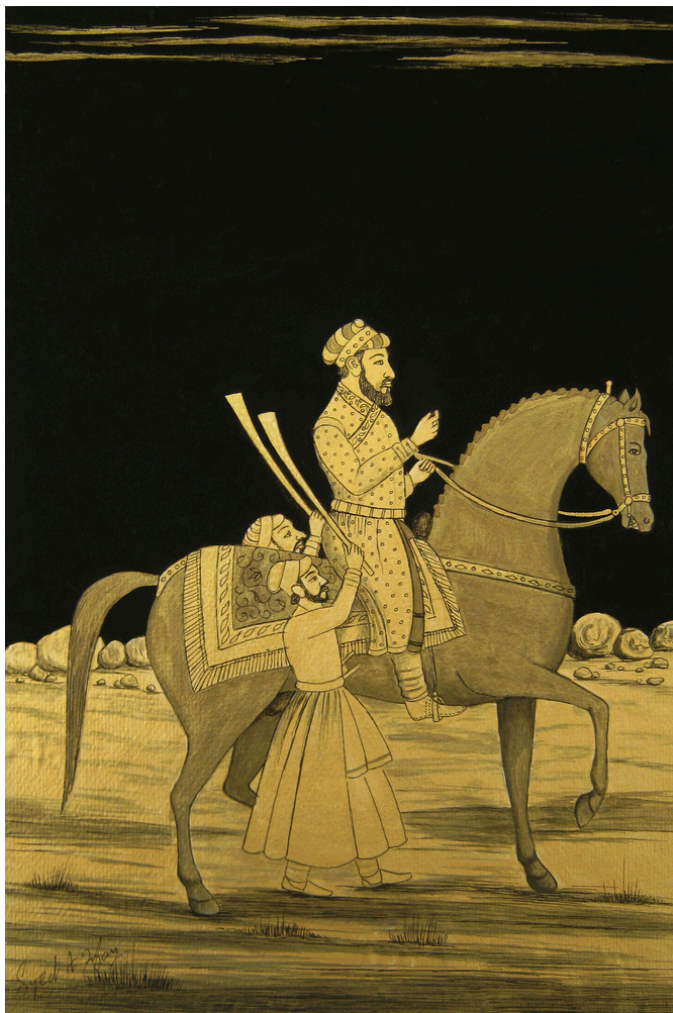
Syed A. Irfan

Syed A. Irfan, a name that hardly needs any more recognition in concern with miniature art of Pakistan. An artist whose scales are small but scopes are certainly very big. Syed A. Irfan is undoubtedly a modern master and a true identity of Pakistan. He is a self-taught artist. He was born on 26th May 1985 in Karachi. He developed the passion for miniature painting when he visited with his family at Lahore Museum in 1997.

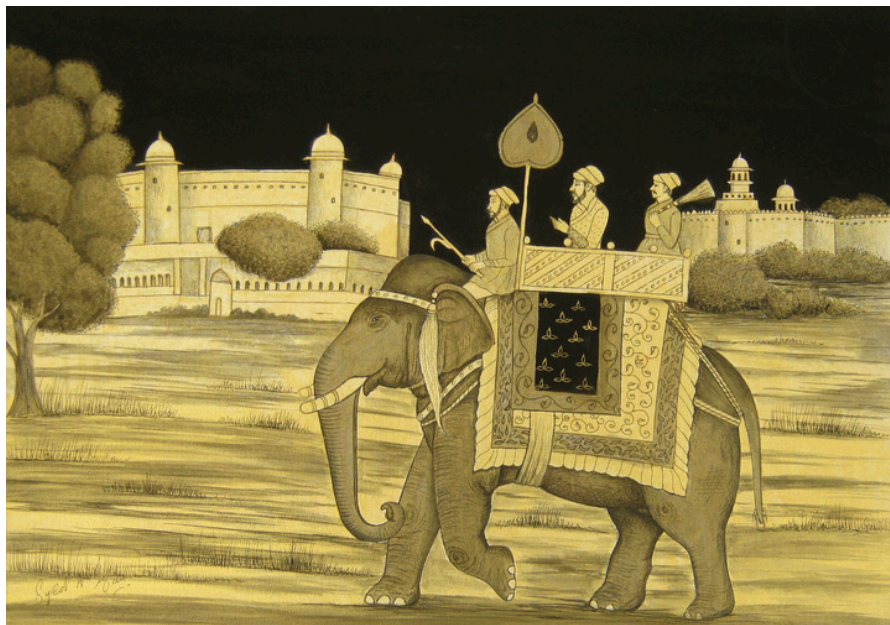
He has exhibited his work in group and solo exhibitions in different countries of the world, like Pakistan, USA, Dubai, Turkey, Canada, London, China, Saudi Arabia, India, Egypt, and Algeria, as a Pakistani representative. He has done six solo and above 70 group exhibitions in different countries. Mughal traditional miniature has actually become his identity. Furthermore, he has also done Oriental and contemporary-style miniature work. Seeing his great talent, he'd been awarded by PTV the Best Performance Award in 2007. He won a special prize in the Sadequain Award Exhibition in 2006, and in 2001 he got first prize in the All Degree College Art Exhibition. Now in 2022, he has been 2nd awarded by the 12th Algeria Miniature Art Festival 2022, Algeria.

Syed Irfan's work is deeply rooted in the rich tradition of Mughal miniature painting, a centuries-old art form that flourished in the courts of the Mughal emperors. Through his paintings, he strives to revive and reinterpret this classical style, infusing it with contemporary themes while preserving its intricate detailing and vibrant color palette. Mughal miniatures are a visual tapestry of history, culture, and spirituality. Each piece he creates is a tribute to the meticulous craftsmanship and profound symbolism inherent in this art form.

The delicate brushwork, the layering of pigments, and the meticulous attention to detail are not just techniques but a means of connecting with the legacy of the past. In his work, he explores the intersection of tradition and modernity, drawing inspiration from historical narratives, Persian poetry, and the grandeur of Mughal architecture. His paintings often depict scenes of royal life, nature, and allegorical tales, but with a modern twist that resonates with contemporary audiences.



Shah Jahan with Followers | Black & Gold on Wasli | 10 x 14 inches



Prince on Elephant | Watercolor & Gold on Wasli | 10 x 14 inches



Mughal Lady with Peacock | Watercolor, Teawash & Gold on Wasli | 9 x 13.5 inches



Elephant Fighting | Watercolor, Teawash & Gold on Wasli | 12 x 14.5 inches



Mughal Empire Jahangir with Follower | Watercolor, Teawash & Gold on Wasli
9.5 x 13 inches



King Baber with Follower| Watercolor, Teawash & Gold on Wasli | 9 x 13.5 inches



Mumtaz Mahal | Watercolor & Gold on Wasli | 7 x 7 inches



Shahjahan with Mumtaz Mahal | Watercolor & Gold on Wasli | 9 x 12 inches

Farrah Mahmood Rana

Farrah is a graduate of the National College of Arts (NCA) Lahore and specializes in Asian miniature painting, specifically in the style of Mughal miniatures of the Subcontinent. She did her Masters in Art Education from the Beacon House National University (BNU, Lahore) in 2016. She has delivered many lectures and conducted workshops at several prestigious colleges, universities, and arts institutions at the national and international level, i.e., the U.K., U.S.A., Austria, France, and China, on a variety of subjects related to visual art. Her work deals with a range of socio-political issues.

Farrah has participated in more than 160 national and international group exhibitions, including those held in the U.S.A., Canada, U.K., Austria, France, Hong Kong, China, Baku (Azerbaijan), Tehran, Jeddah, India, Bangladesh, the U.A.E., Bahrain, and Greece. She has also had 4 solo exhibitions. Farrah has recently received the prestigious President's Award for Pride of Performance 2024. She received the Excellence Award from Beaconhouse National (BNU) in December 2023. She received the "Charles Wallace Visiting Fellowship Award (UK)" for excellence in the field of traditional miniature art. The magazine selected 100 women in Pakistan who have made a change through their work and awarded them the "Best Women Role Model Award 2016.

Surroundings fascinate Farrah as an artist. We are part of society, which is a combination of emotions of pain, happiness, and joy. Her work conveys messages through symbols, colors, and connections. She uses symbols like the lotus flower, which represents the purity of a female, and the rebirth, or self-regeneration, in many eastern religions. With the tree, she symbolizes herself as part of society. The tree is sensitive and twisted with deep roots, which shows her natural bond with society.

She believes dialogue is essential in our society, with routine matters and with living and non-living things. Dialogue is what connects us with others through the past, present, and even the future. Identity is like your personal brand, and it is what makes you stand out in the sea of faces. Knowing who you are helps you make choices that align with your values and passions. It's like having a compass that guides you through life's adventures. Understanding your identity can boost self-confidence and help you form deeper connections with others.



Identity-I | Gouache, Gold Leaf and collage on Digital art | 10.5 x 17 inches



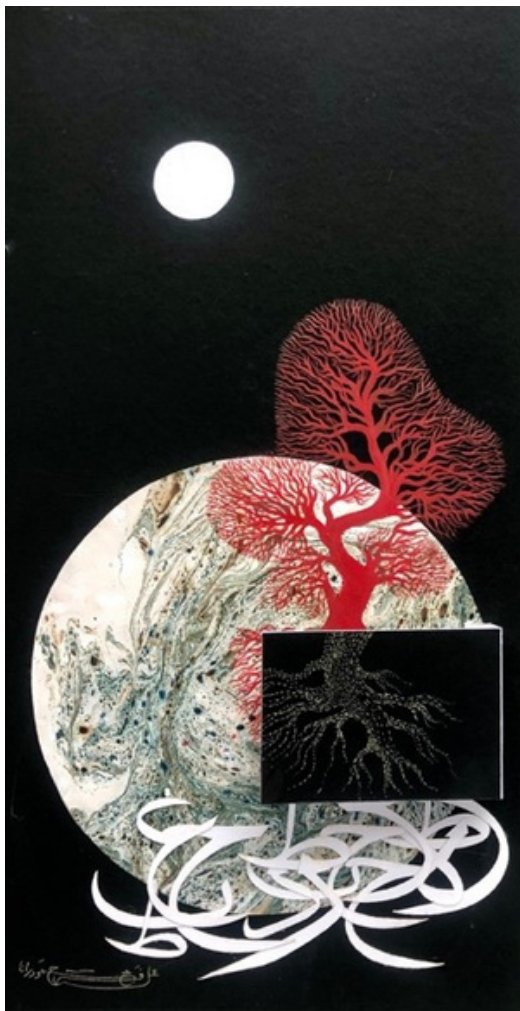
Identity-II | Gouache, Gold Leaf and collage on Digital art | 10.5 x 17 inches



Identity-III | Gouache, Gold Leaf and collage on Digital art | 10.5 x 17 inches



Dialogue- I | Gouache, Gold leaf and Collage on wasli | 9 x 18 inches



Dialogue- II | Gouache, Marbling and Collage on wasli | 9 x 18 inches

Rizwan Ali

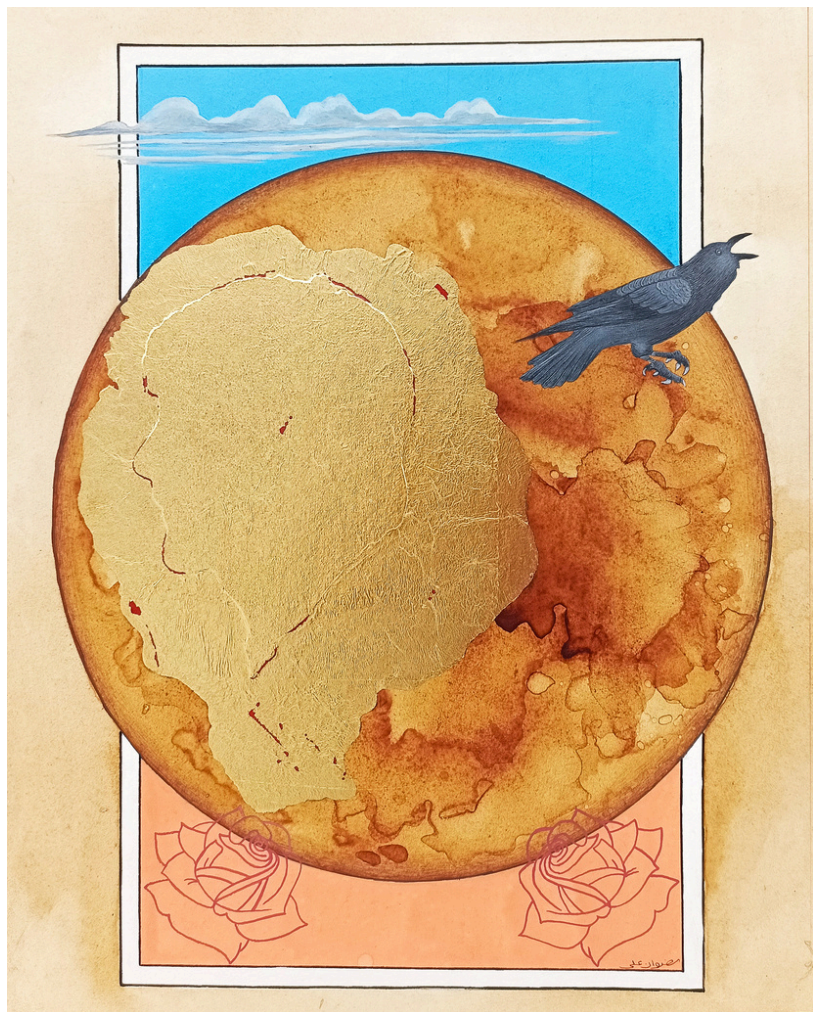
Rizwan Ali navigates the realm of artistic expression using gouache, silver and gold leaf, tea stains, and powdered gold on Wasli, a combination that encapsulates the true essence of mixed media. His artistic focus centers on portraits and figures meticulously rendered in the pure miniature technique.

In his compositions, he strives to capture the extraordinary within the ordinary, presenting a true depiction of everyday phenomena. Characters emerge from both Western and Eastern art traditions, contributing to a visual narrative that explores themes of romance, humor, love, celebration, culture, and spirituality in a contemporary context.

His recent body of work embarks on a comparative study between Eastern and Western aesthetics in art creation. Drawing inspiration from classical masters' paintings, he engages in a process of re-creation and re-evaluation. By juxtaposing the activities and happenings observed during both eras within a single frame, he seeks to weave a cohesive narrative that recalls art history in a new light.

This approach not only serves as homage to the classical masters but also prompts a fresh perspective on the evolution of artistic expression across cultures and time periods. The resulting artworks become a dialogue between traditions, revealing connections and dissonances that transcend geographical and temporal boundaries.

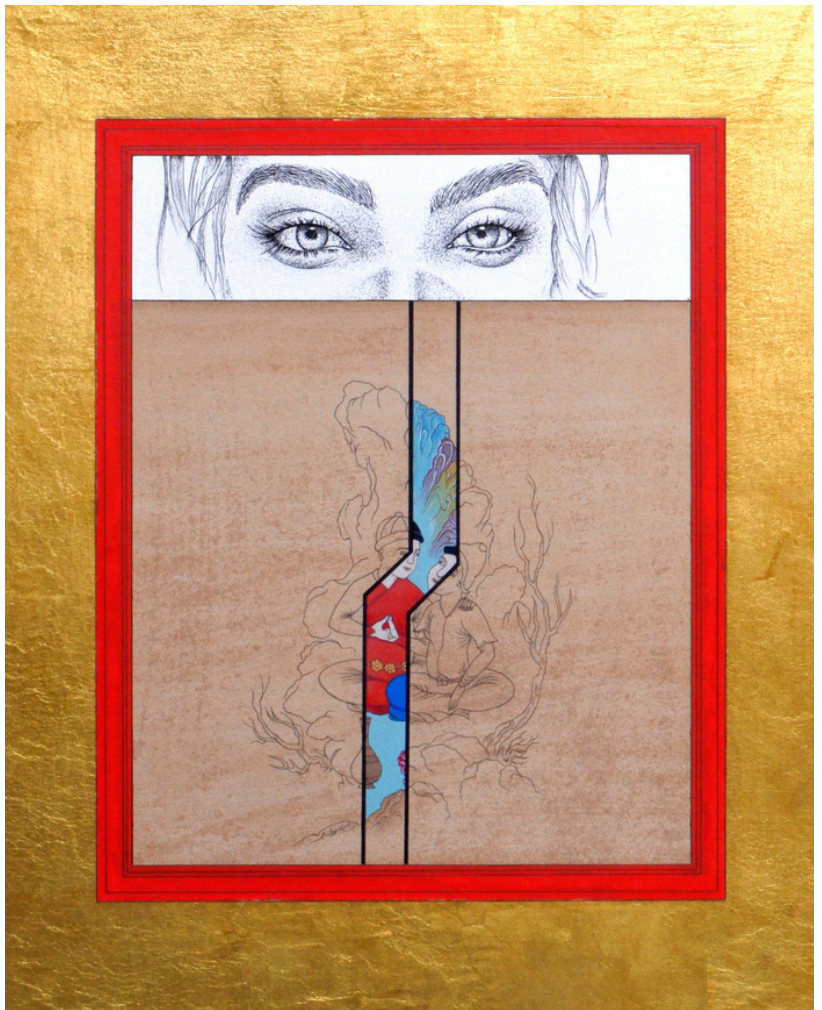
Through this exploration, he aims to foster a deeper understanding of the intersections between Eastern and Western aesthetics, offering viewers a glimpse into the rich tapestry of art history. He believes that by intertwining classical elements with contemporary sensibilities, new formations of narratives emerge, contributing to the ongoing dialogue of art in the present era.



Letting Go | Gouache, Gold Leaf and Mixed Media on Wasli | 10 x 13 inches



Still on My Mind | Gouache, Gold Leaf and Mixed Media on Wasli | 10 x 13 inches



Beholder-I | Gouache, Gold Leaf, Tea Wash and Mixed Media on Wasli | 12.5 x 15 inches



Beholder-II | Gouache, Tea Wash and Mixed Media on Wasli | 13 x 15.5 inches



Passing By | Gouache, Gold Leaf, Tea Wash and Mixed Media on Wasli | 13 x 20 inches

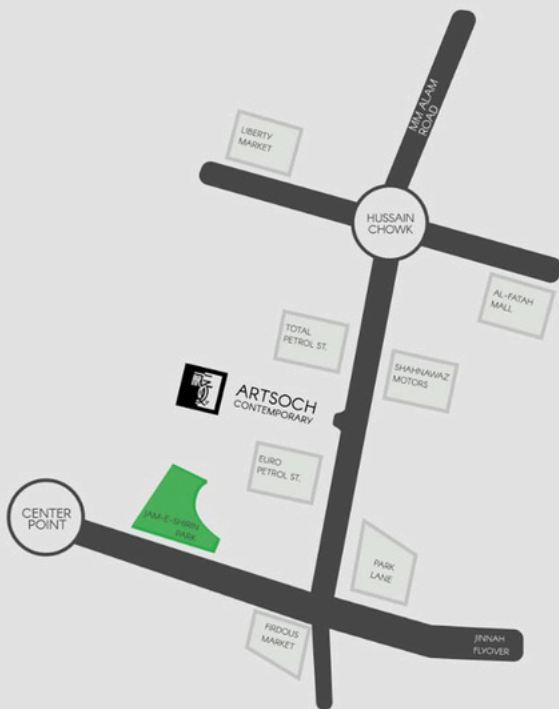


On a Spiritual Journey | Gouache, Gold Leaf, Tea Stain and Mixed Media on Wasli
13 x 21 inches



ARTSOCH

LOCATION





23 MM Alam Road Gulberg III | www.artsoch.com | +923175111195