

**Artsoch Contemporary**  
presents

# A FLIGHT OF TWO HALF BIRDS

**Travelling Solo Show by**  
**Amna Walayat**  
Pakistani-Irish Artist

Opening on Wednesday  
**13<sup>th</sup>** November 2024



**ARTSOCH**  
CONTEMPORARY



**ARTS OFFICE**  
CULTURE CANAL CHARTER  
CITY OF DUBLIN



**Cultúr Éireann**  
**Culture Ireland**  
Promoting Irish Arts Worldwide



# Exhibition Note

The exhibition “Flight of Two Half Birds” is a commissioned series for the EVA platform, featuring 43 performative self-portraits, delves into the complex experience of identity, loss, and belonging for displaced individuals navigating multicultural worlds. The artist, working through traditional Indo-Persian miniature techniques combined with mixed media, creates a procession of figures representing both the familiarity of home and the dislocation of new surroundings. Each piece embodies the dualities of identity, loss and adaptation, estrangement and resilience while exploring a utopian quest for a unified self. As a Pakistani-Irish artist and migrant, the artist uses this work to confront the enduring tensions between national, cultural, and ideological divides, inviting viewers to contemplate the journey toward integration within an ever-evolving sense of place.

# Amna Walayat

## Bio and Artist Statement

Amna Walayat is a Cork-based, Pakistani-born visual artist. She works for Backwater Artists and is a member of Sample-Studios and Art Nomads. Her art examines themes of identity, displacement, and religious symbolism associated with her dual heritage. She recently exhibited with the 40th EVA International Platform Commissions in Limerick that travelled to The Dock, Leitrim, and Sirius Art Centre. Her recent projects include a solo show as part of the Cork Midsummer Festival (2022) and participation in exhibitions at the IMMA and RHA (2021). She was the Cork County Council Creative Producer Resident (2021-22) and the SIRIUS/Create Resident (2022). Her work is part of the Arts Council Collection. She was awarded Arts Council Bursary (2020-2024), Next Generation (2021), Agility (2021), and Professional Development (2020). She holds an MA in Art History from UCC (2020) and an MA in Art from Punjab University, Pakistan (2001). She has worked as Programme Organizer with the Pakistan National Council of the Arts; Curator with Alhambra Arts Council & PhD studio-based researcher with PURAF, Punjab Uni 2001-07. Annually, she organizes the Basant/Kite Festival with the support of Cork County Council and Creative Ireland to celebrate and promote South Asian identity in Ireland.

Her proposed body of work for the EVA platform commission is a series of performative self-portraits that explore the mourning of the self and sense of home, reflecting on the human experience of displaced citizens residing in various parts of a multi-cultural world. In her work, she tries to express this duality of cultural experience of home and new home by creating self-portraits through traditional Indo-Persian miniature techniques combined with questions of identity, estrangement, and loss, which she interprets through performative guises and self-portraiture.

For her as an artist, the self-portrait series allows a multiplicity of identities and conflicting experiences. This proposed body of work aims to consider a search for utopia through this process of self-exploration and to reflect on the challenges that she faces in an in-between space. This large series of 43 works will include paintings, lightboxes, some small sculptures, and video.

Being a dual national Pakistani and Irish citizen, her own position as a migrant activist/artist is challenging and evolving. Like many other displaced people, she tries to find a way to be accommodated into the milieu of two ideological poles, preexisting for centuries. Uprooting from one soil and re-rooting in another offers a sense of something left behind: loss and grief on the one hand, and stigma, otherness, estrangement, loneliness, adaptation, integration, survival, and a sense of "spiritually orphaned" on the other.



***Daisy Cutter***

Half tone, watercolor, gouache, tea wash,  
ink, earth pigments, lead pencils, marbling  
and 22ct gold on stretched sheep skin  
36 x 48 cm (Irregular Edges)





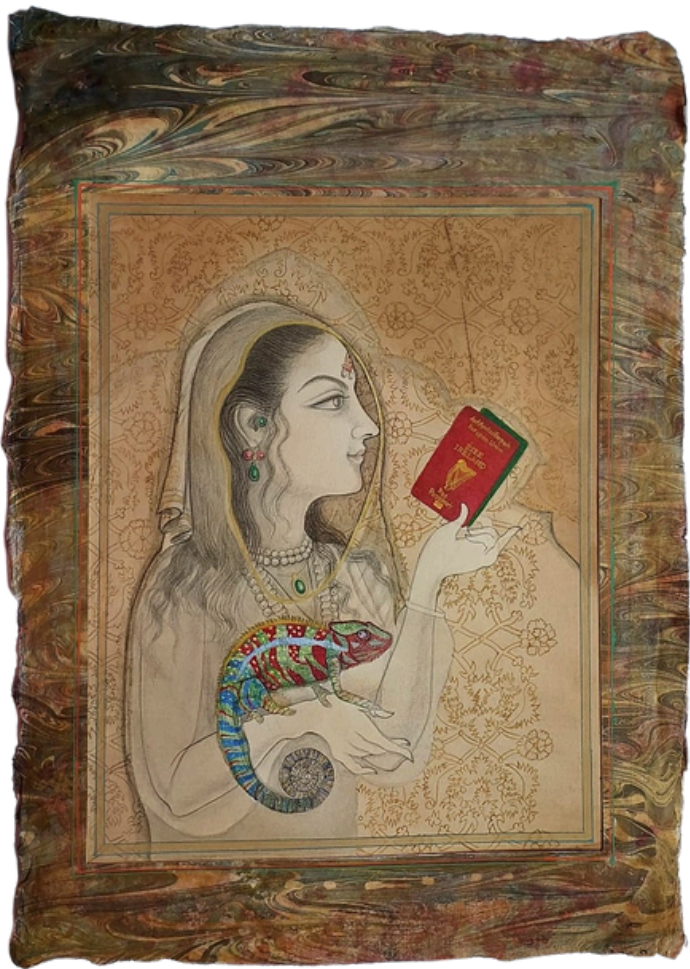
***Self-portrait (Untitled)***

Watercolour, gouache, tea wash,  
pigments, lead pencils and 22-carat gold  
on watercolour paper  
35 x 49 cm



***Self-portrait with Houbara Bustard***

Gouache, tea wash, ink, earth pigments,  
lead pencils, marbling and 22-carat gold  
on watercolour and wasli paper  
35 x 49 cm (irregular edges)



***Self-portrait (Untitled)***

Gouache, tea wash, pigments, lead  
pencils, marbling and 22-carat gold on  
wasli paper  
35 x 49 cm (irregular edges)





***Self-portrait with needle***

Traditional water colour, tea wash on

Wasli paper

20x 30 cm



***Self-portrait with needle***

Traditional water colour, tea wash on  
Wasli paper  
20x 30 cm



**Self-portrait (Untitled)**

Watercolour, gouache, tea wash,  
pigments, lead pencils, marbling and 22-  
carat gold on wasli paper  
35 x 49 cm (irregular edges)





***Self-portrait with a Multilingual Tongue***

Watercolour, gouache, tea wash, pigments,  
lead pencils, marbling and 22-carat gold on  
wasli paper

35 x 49 cm (irregular edges)



***Self-portrait with Lock***

Traditional water colour, 24c.gold, tea  
wash on Wasli paper  
20 x 30 cm



***Self-portrait: building a home with thread***

Traditional water colour, 24c.gold, tea wash on

Wasli paper

20 x 30 cm



**Self-portrait with purr purzey پر پرزے  
(Wings and Machinery)**

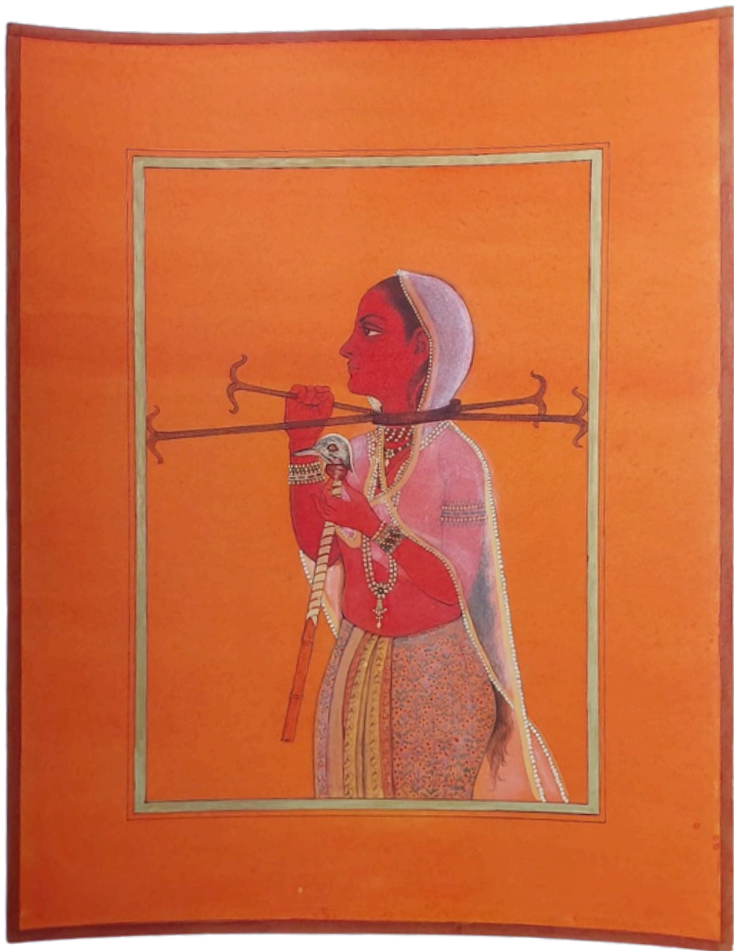
Gouache, tea wash, ink, earth pigments and  
22-carat gold on Wasli paper  
55.5 x 70.5 cm





***Self-portrait (Journey)***

Gouache, ink, pigments and 22-carat gold  
on Wasli paper  
55.5 x 70.5 cm

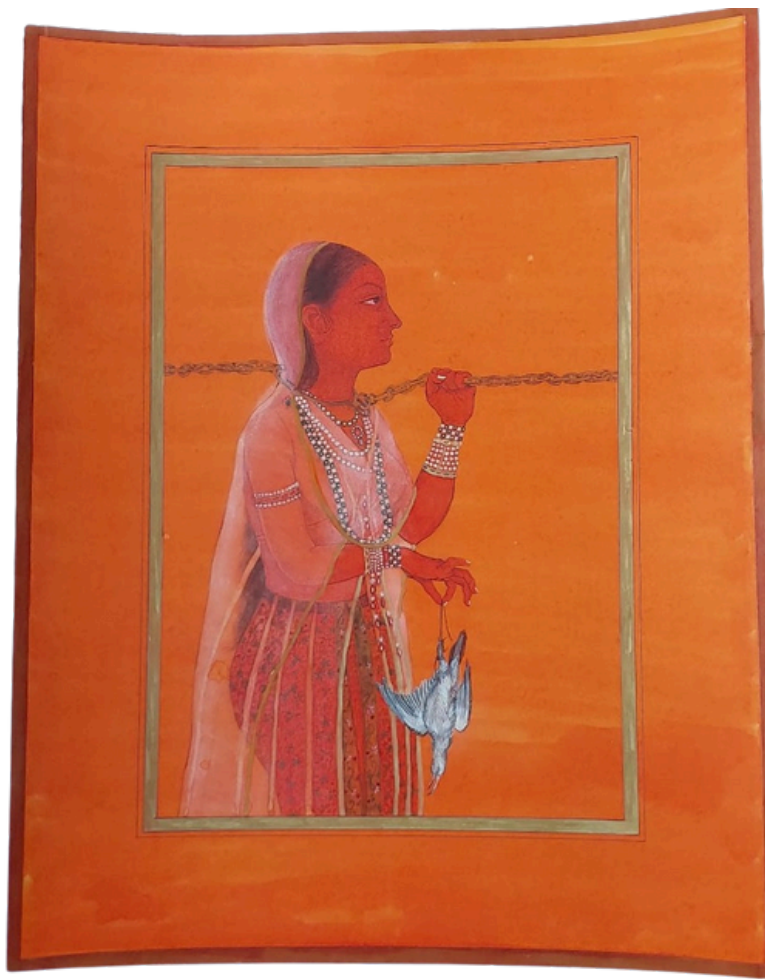


***Self-portrait with Gulu-band طُوق (Necklace)***

Gouache, tea wash, ink, earth pigments, marbling  
and 22-carat gold on Wasli paper

55.5 x 70.5 cm





***Self-portrait with Tooq گلو بند (Collar)***

Gouache, tea wash, ink, earth pigments,  
marbling and 22-carat gold on Wasli paper  
55.5 x 70.5 cm



**Self-portrait: Conflict**

Gouache, tea wash, pigments, lead pencils,  
marbling and 22-carat gold on Wasli paper  
35 x 49 cm (irregular edges)



***Self-portrait with Poppy***

Watercolour, gouache, tea wash, pigments, lead pencils, marbling and 22-carat gold on Wasli paper  
35 x 49 cm (irregular edges)



**Self-portrait: *Butterfly Effect***

Gouache, tea wash, earth pigments, lead pencils,  
marbling and 22-carat gold on Wasli paper  
35 x 49 cm (irregular edges)



***Self-portrait: Anti Pecking***

Watercolour, gouache, tea wash, earth pigments, lead pencils, marbling and 22-carat gold on Wasli paper  
35 x 49 cm (irregular edges)





***Self-portrait with Monkey Puzzle Tree***

Watercolour, gouache, tea wash, pigments, lead pencils, marbling and 22-carat gold on Wasli paper  
35 x 49 cm (irregular edges)





***Home and Heart***

Watercolour, gouache, tea wash, pigments, lead  
pencils, marbling and 22-carat gold on Wasli paper  
35 x 49 cm (irregular edges)



***Self-portrait: Colonised***

Gouache, tea wash, ink, earth pigments and 22-carat gold on Watercolour paper  
36 x 48 cm (irregular edges)



***Self-portrait - Shame Series # 5***

Neem Rung/ half tone and Gouache on Wasli  
8 x 12 inches





***Self-portrait - Shame Series # 5***  
Neem Rung/ half tone and Gouache on Wasli  
8 x 12 inches





# ARTSOCH

LOCATION





23 MM Alam Road Gulberg III | [www.artsoch.com](http://www.artsoch.com) | +923175111195